



PROPERTY REPORT

1900 NE 15th Ave, Fort Lauderdale, FL 33305

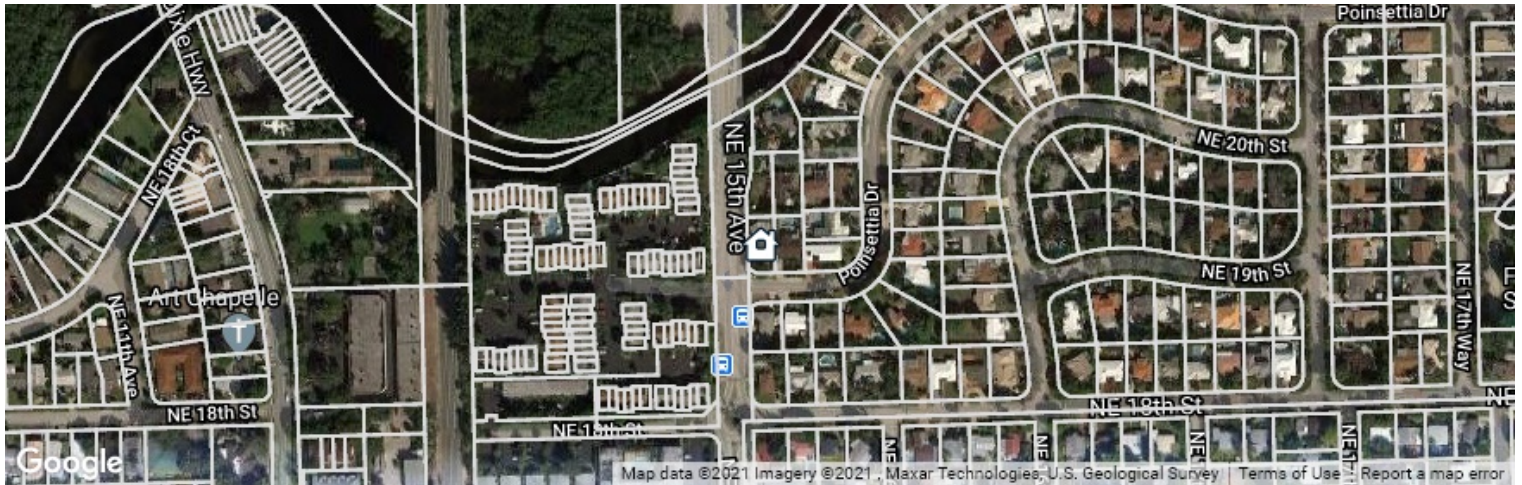


Presented by

**Robin Sing-Cunningham** | REALTOR®

Florida Real Estate License: 3012273

## 1900 NE 15th Ave, Fort Lauderdale, FL 33305



Legend:  Subject Property

● Active \* Active With Contract: 1/29/2021

### List Price

**\$518,000**

Active Date: 1/29/2021  
Listing ID: A10990423

### Your Refined Value

**\$655,288**

### Current Estimated Value

**\$535,960**

Last RVM® Update: 2/24/2021

RVM® Est. Range: \$509K – \$563K

RVM® Confidence: ★★★★★

↓ RVM® Change - Last 1 Month: -\$21,220

↑ RVM® Change - Last 12 Months: 0.01%

*This report contains data and information that is publicly available and/or licensed from third parties and is provided to you on an "as is" and "as available" basis. The information is not verified or guaranteed. Neither this report nor the estimated value of a property is an appraisal of the property. Any valuation shown in this report has been generated by use of proprietary computer software that assembles publicly available property records and certain proprietary data to arrive at an approximate estimate of a property's value. Some portions of this report may have been provided by an RPR user; RPR is not responsible for any content provided by its users. RPR and its information providers shall not be liable for any claim or loss resulting from the content of, or errors or omissions in, information contained in this report.*



# Home Facts

## Public Remarks

Renovated 5 /4 home w/ fully upgraded bathrooms, IMPACT doors & windows, quartz counters & porcelain floors, One of a kind - must see for yourself.

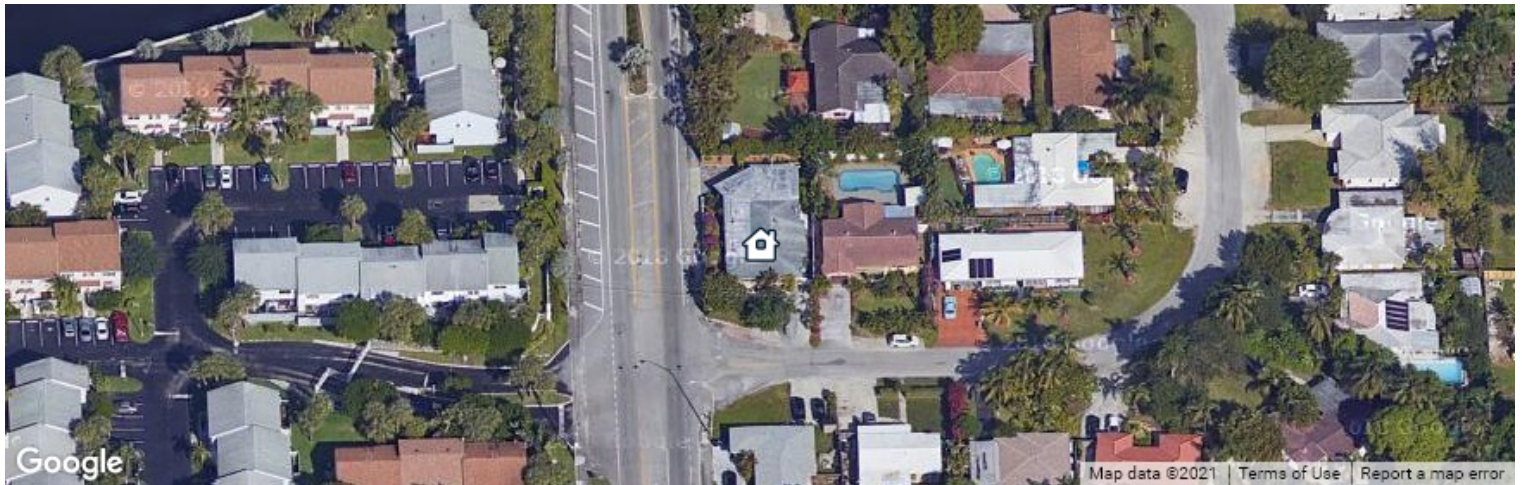
Home Facts	Public Facts	Listing Facts	Realtor Refinements
Property Type	Single Family	Single Family	-
Property Subtype	Single Family Residential	Single	-
Bedrooms	3	4	5
Total Baths	2	4	-
Full Baths	2	4	-
Partial Baths	-	-	-
Living Area (sq ft)	2,595	2,595	-
Lot Size	6,225 sqft	6,225 sqft	-
Lot Dimensions	6225 SF	-	-
Year Built	1956	1956	-
Roofing	Composition Shingle	Flat Tile Roof, Roof Shingle	-
Heating	-	Central Heat, Electric Heat	-
Cooling	Central	Central Cooling, Electric Cooling	-
Foundation	Slab	-	-
Construction	-	Concrete Block	-
Exterior Walls	Stucco	-	-
Number of Stories	1	-	-


## Homeowner Facts

Owner Name (Public)	Yavits Lda Investments Holding I Llc
Mailing Address	777 Brickell Ave # 500-9342 Miami FL 33131-2809
Vesting	Company/Corporation



## Extended Home Facts



Legend:  Subject Property

### Interior Features

Cooling	Central Cooling, Electric Cooling
Dining	Dining - Living, Eat-In Kitchen, Snack Bar/Counter
Floor	Tile Floors, Wood Floors
Heating	Central Heat, Electric Heat
Pet	Restrictions Or Possible Restrictions

### Interior Details

Interior Walls	Gypsum Board (Drywall, Sheetrock, etc.)
Other Rooms	Sun Room (Solarium, Florida Room)
Floor Cover	Tile
Adjusted Area	2576 sq ft
Total Area	2576 sq ft
Porch/Stoop	144 sq ft

### Exterior Features

Construction	Concrete Block
Roof	Flat Tile Roof, Roof Shingle
Sprinkler	Auto Sprinkler
Parking	Driveway, Pavers
Sewer	Other Sewer
Water	Municipal Water
View	Garden View
Lot Size Features	Less Than 1/4 Acre Lot

### Exterior Details

Lot Size - Square Feet	6225 sq ft
Lot Size - Acres	0.143 ac
Roof Type	Gable or Hip

### Location Details

Subdivision	Poinsetta Heights
Area Description	3380
Walkability Score (out of 5)	Overall: 2.7   Amenity: 2.7   Leisure: 3.1

### Other Details

Effective Year Built	1968
Building Condition	Average
Building Quality	C
Pavers	565

### Schools (from Listing Data)

Elementary School	Bennett Elementary School
Middle School	Sunrise Middle School
High School	Fort Lauderdale High School

### (based on location)

Elementary School	Bennett Elementary School
Middle School	Sunrise Middle School
High School	Fort Lauderdale High School
School District	Broward County School District

## Property Photos







# Historical Photos



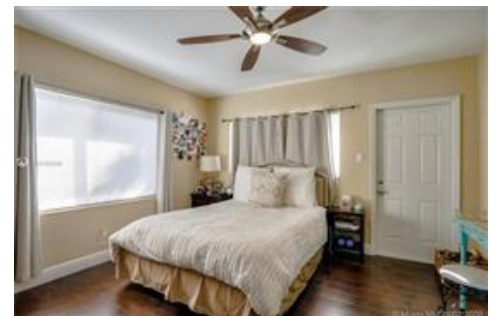
1900 NE 15 Avenue, Ft Lauderdale, FL 33305



FIRST FLOOR

This floor plan is provided as a general guide only. It is not intended to be used as a legal document. The actual dimensions of the property and the layout of the interior may vary from the floor plan. The agent is not responsible for any errors or omissions. The floor plan is provided as a general guide only. It is not intended to be used as a legal document. The actual dimensions of the property and the layout of the interior may vary from the floor plan. The agent is not responsible for any errors or omissions.

© 2021 RPR LLC











## Refined Value

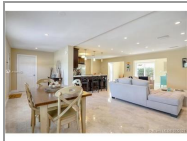
Original Estimated Value	See page 2 of report for details	\$535,960
Home Facts	See Home Facts for details	+\$119,328
Home Improvements	See Home Improvements for details	\$0
Needed Improvements	See Needed Improvements for details	\$0
Market Conditions	See Market Conditions for details	\$0
Changes to Estimated Value based on all refinements		\$655,288
		+\$119,328

## Comps and Adjustments



LEGEND: Subject Property Pending For Sale or For Lease Distressed Recent Sale Off Market

### This Property



**Active**

1900 NE 15th Ave  
Fort Lauderdale, FL 33305

Proxim.	Days in RPR	Date	Amount	\$/sq ft	Living Area	Lot Size	Beds	Baths	Built
—	40 days	—	—	\$200	2,595 sqft	6,225 sqft	5	4	1956

No comps have been selected for this property.

## Property History

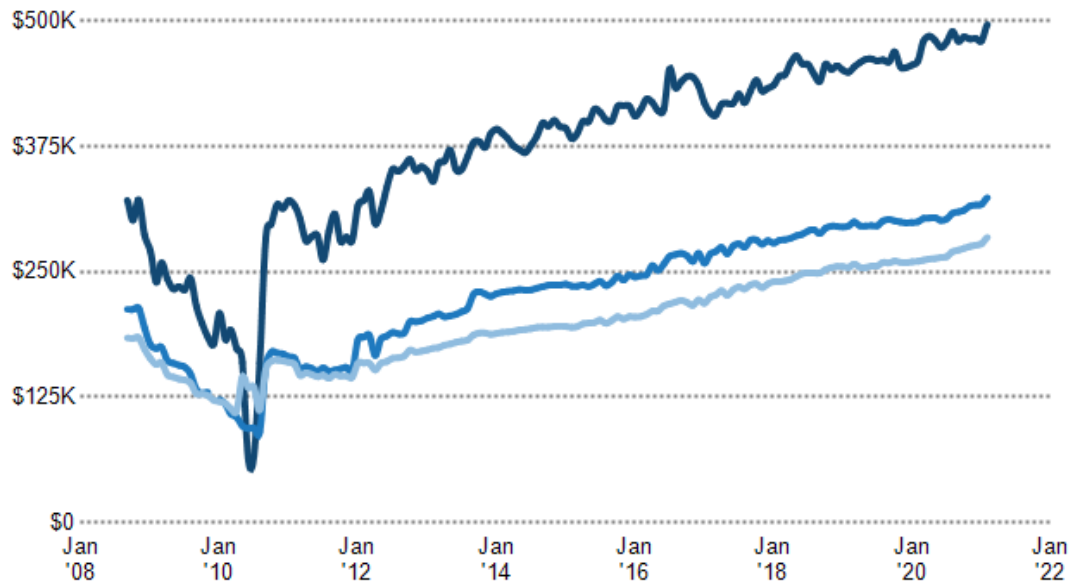
### Median Estimated Home Value

This chart displays property estimates for an area and a subject property, where one has been selected. Estimated home values are generated by a valuation model and are not formal appraisals.

Data Source: Valuation calculations based on public records and MLS sources where licensed

Update Frequency: Monthly

■ 33305  
■ Broward County  
■ Florida



### Sales History

Sales Date	Sales Amount	Price per sq. ft.
12/16/2014	\$275,000	\$105
5/22/2008	\$210,000	\$80
7/18/2005	\$449,900	\$173
11/1/1986	\$60,714	\$23

### Assessed Values

Date	Improvements	Land	Total	Tax
2020	\$271,470	\$31,130	\$302,600	\$6,152
2019	\$285,380	\$31,130	\$316,510	\$6,193
2018	\$302,760	\$31,130	\$333,890	\$6,193
2017	—	—	\$308,630	\$5,960
2016	—	—	\$278,300	\$5,645
2015	—	—	\$253,000	\$5,186
2014	—	—	\$245,670	\$5,856
2013	\$261,890	\$31,130	\$293,020	\$5,262
2012	\$235,210	\$31,130	\$266,340	\$4,699
2011	\$182,950	\$56,030	\$238,980	\$4,246
2010	—	—	\$167,810	—
2009	—	—	\$197,400	—
2008	—	—	\$417,570	—
2007	—	—	\$488,250	—

### Legal Description

**APN:** 49-42-35-21-0230  
**Tax ID:** —  
**Zoning:** —  
**Census Tract:** 120110407.011001

**Abbreviated Description:**  
 DIST:0312  
 CITY/MUNI/TWP:FORT  
 LAUDERDALE  
 SEC/TWN/RNG/MER:SEC 35  
 TWN 49S RNG 42E POINSETTIA  
 HEIGHTS RIVER ADD 26-27 B  
 LOT 22 S 45 OF W1/2 LESS W5  
 FOR RD,23 W1/2 LESS W5 FOR  
 RD BLK 1  
**City/Municipality/Township:**  
 Fort Lauderdale, FL 33305



## Mortgage Records

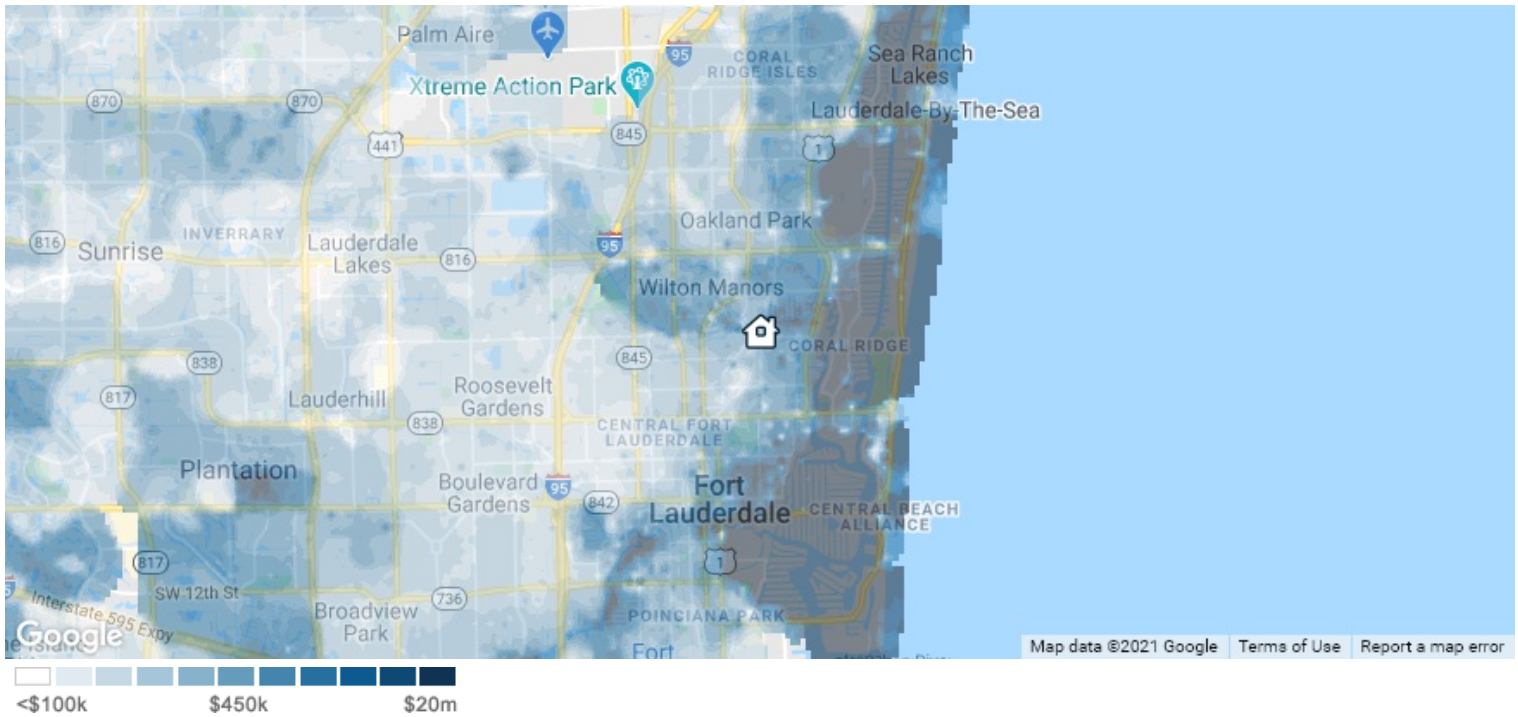
Recording Date	7/18/2005
Borrower Name	HARVEY LINE, FRANCES LINE
Lender Name	BNC MORTGAGE INC
Lender Type	Subprime Lender
Loan Amount	\$89,980
Document Number	105191685
Loan Type	Stand Alone Second
Contract Date	5/23/2005
Due Date	6/1/2020
Finance Type	Fixed Rate

## Deed Records

Recording Date	12/16/2014
Document Type	Warranty Deed
Sales Price	\$275,000
Sales Price Code	Sales Price or Transfer Tax rounded by county prior to computation. Varies by county.
Buyer Name	YAVITS LDA INVESTMENTS HOLDING I LLC
Buyer ID	Company or Corporation
Seller Name	BLAIR DOUGLAS RUSSELL CONSULTING INC
Seller ID	Company or Corporation
Document #	112698990
Total Transfer Tax	\$1,925
Book #	51319
Page #	1339
Contract Date	12/4/2014

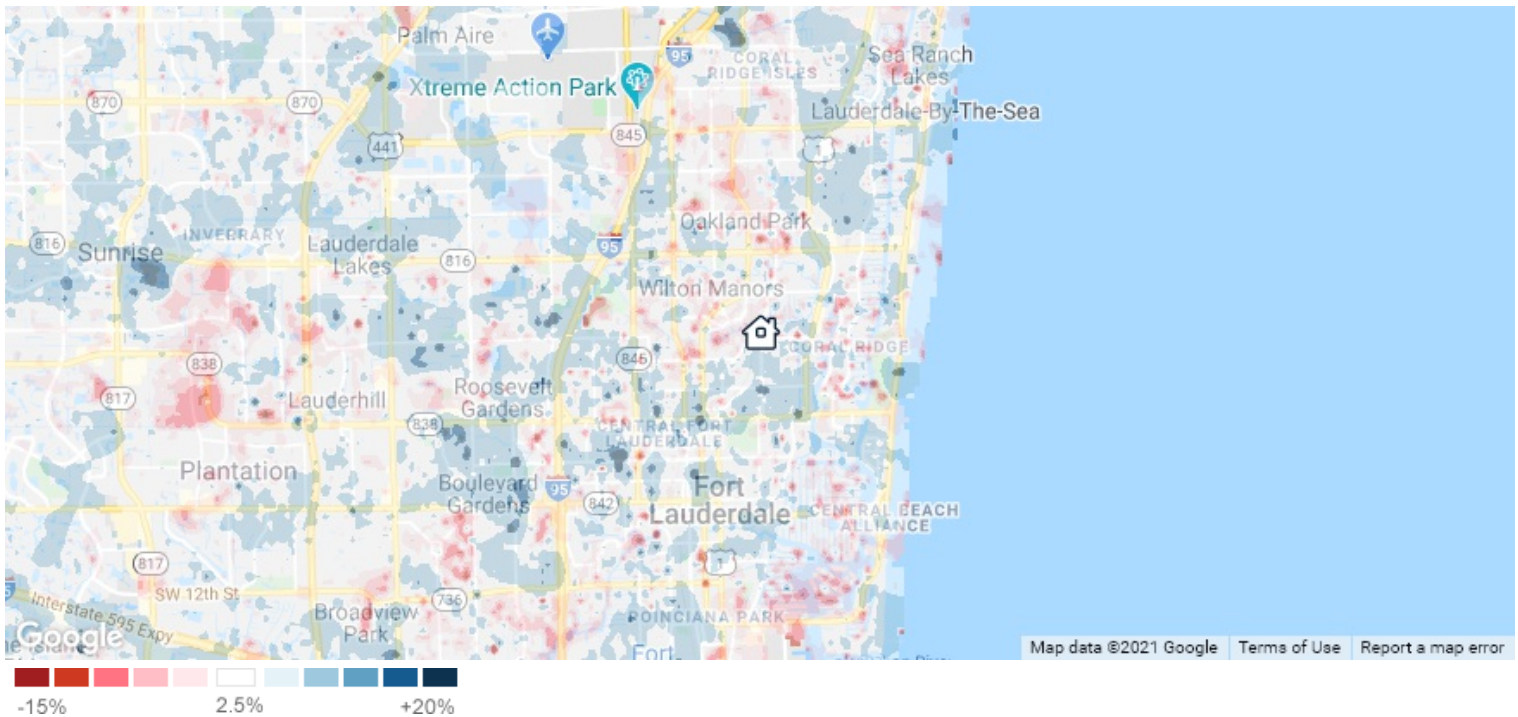


## Estimated Home Values



This map layer shows the average estimated home values, based on the AVMs and RVMs® for properties in an area. Source(s): Public records and MLS data where licensed; updated Quarterly.

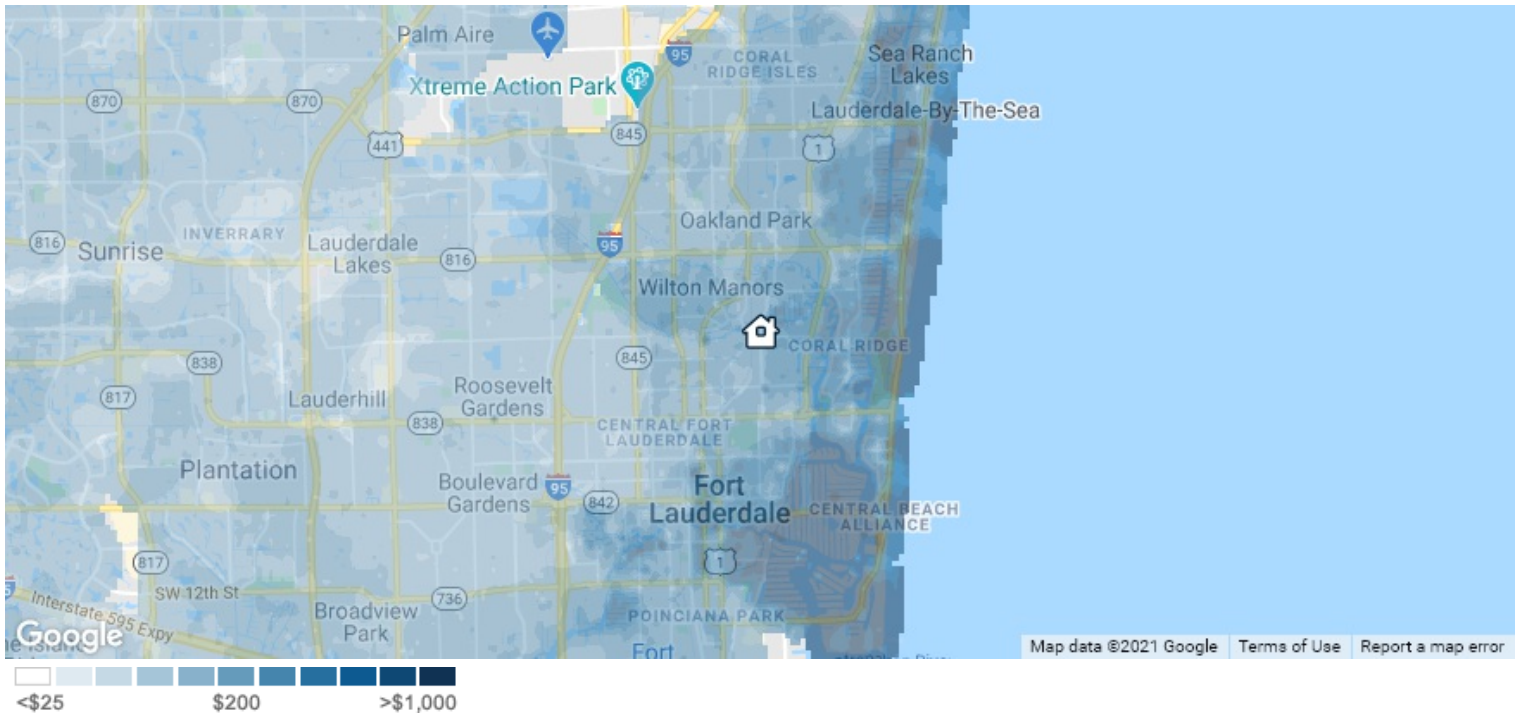
## 12-Month Change in Estimated Value



This map layer shows the change in estimated home values over the past 12 months, based on the AVMs and RVMs® for properties in an area. Source(s): Public records and MLS data where licensed; updated Quarterly.



## Estimated Value per Square Foot

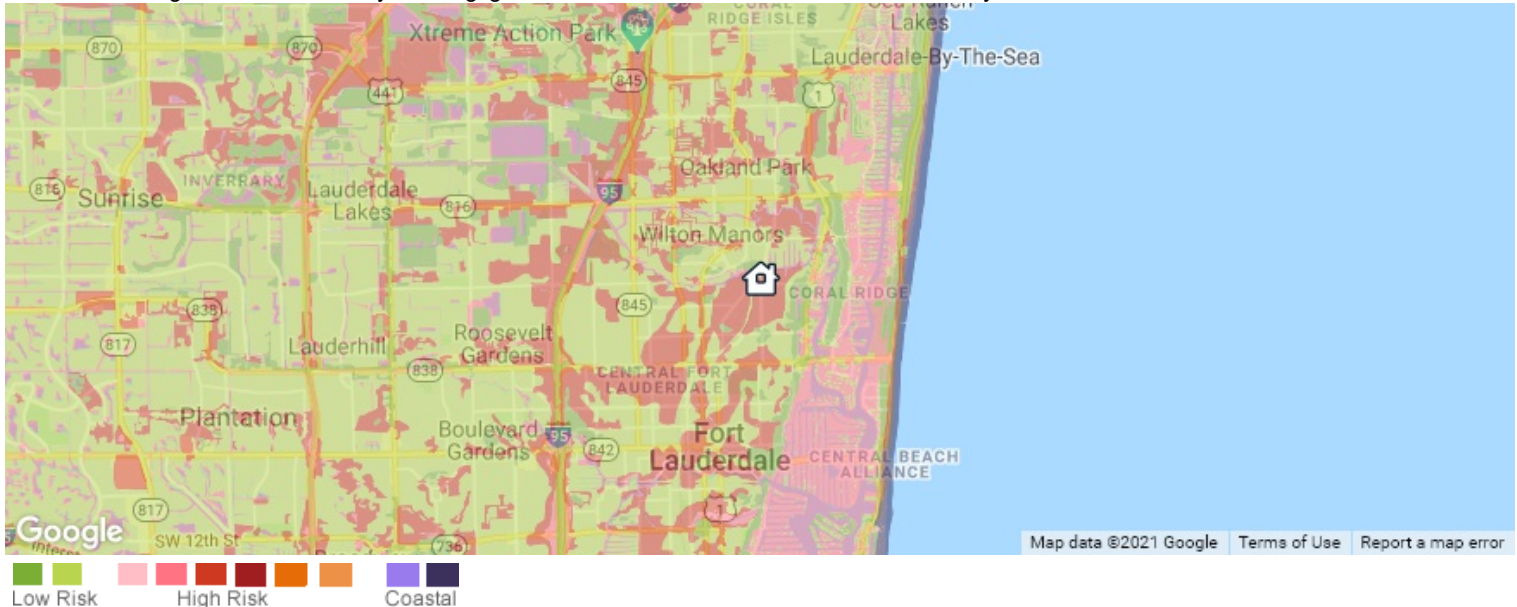


This map layer shows average estimated value per square foot of homes, based on the AVMs and RVMs® for properties in an area. Source(s): Public records and MLS data where licensed; updated Quarterly.

## Flood Zone

**This property is in Flood Zone: AH, High Risk**

Areas with a 1% annual chance of shallow flooding, usually in the form of a pond, with an average depth ranging from 1 to 3 feet. These areas have a 26% chance of flooding over the life of a 30-year mortgage. Base flood elevations derived from detailed analyses are shown at selected intervals within these zones.



This map layer shows an area's flood zone designation as determined by the Federal Emergency Management Agency (FEMA). A high-risk area has a 1 percent or greater annual chance of flooding and a 26 percent chance of flooding over the life of a 30-year mortgage. High-risk areas are red or orange. The coast areas, shown in purple, are also considered high risk. Green areas are low to moderate risk. A moderate-risk area is between risk limits of a 100-year and 500-year flood. White areas are undetermined, and all other areas are considered no or low risk. For more details on the categories of flood risk, see <http://support.nampr.com/entries/319901-what-is-the-flood-zone-heat-map>. Source(s): FEMA; updated Annually.

## Neighborhood: Housing Stats and Charts

	33305	Fort Lauderdale	Broward County	Florida	USA
Median Estimated Home Value	\$496K	\$371K	\$324K	\$284K	\$259K
Estimated Home Value 12-Month Change	+7.9%	+8.1%	+8.1%	+9.2%	+6.7%
Median List Price	\$725K	\$500K	\$310K	\$300K	\$118K
List Price 1-Month Change	-0.7%	0%	-0.6%	—	-5.4%
List Price 12-Month Change	+5.2%	-4.8%	0%	+7.5%	+7.6%
Median Home Age	48	48	40	34	41
Own	60%	53%	62%	65%	64%
Rent	40%	47%	38%	35%	36%
\$ Value of All Buildings for which Permits Were Issued	—	—	\$719M	\$31.5B	\$271B
% Change in Permits for All Buildings	—	—	-10%	+14%	+4%
% Change in \$ Value for All Buildings	—	—	-27%	+12%	+5%

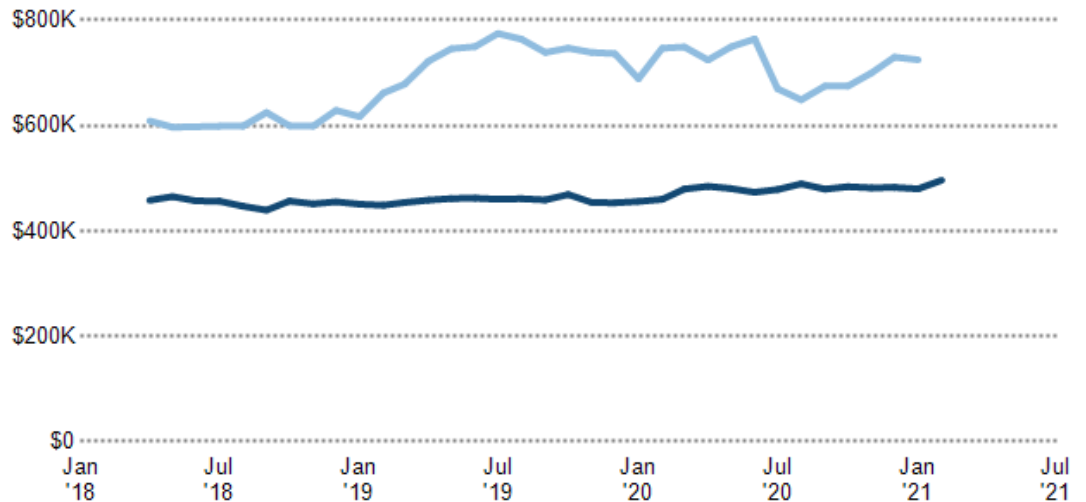
### Median Estimated Home Value vs. Median Listing Price

This chart compares a ZIP code's median estimated home value with its median listing price. Estimated home values are generated by a valuation model and are not formal appraisals.

Data Source: Public records data; listing price data from on- and off-market listings sources

Update Frequency: Monthly

■ Median Estimated Value  
■ Median List Price



## Median Sales Price vs. Sales Volume

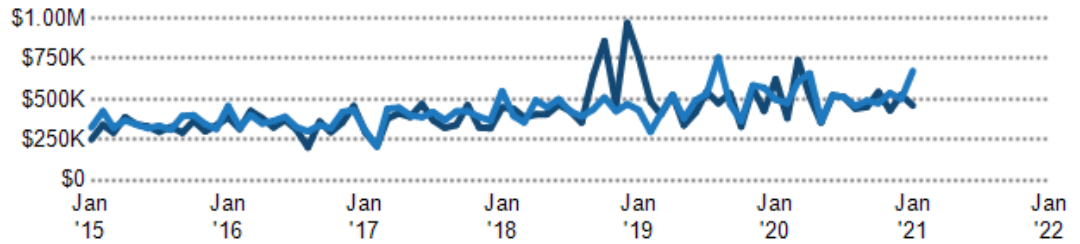
This chart compares the price trend and sales volume for homes in an area. Home prices typically follow sales volume, with a time lag, since sales activity is the driver behind price movements.

Data Source: Public records and listings data

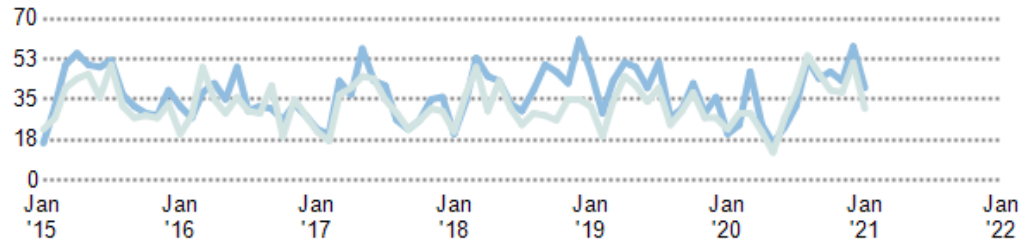
Update Frequency: Monthly

- Median Sales Price Public Records
- Median Sales Price Listings
- Sales Volume Public Records
- Sales Volume Listings

### Median Sales Price



### Sales Volume



## Median Listing Price vs. Listing Volume

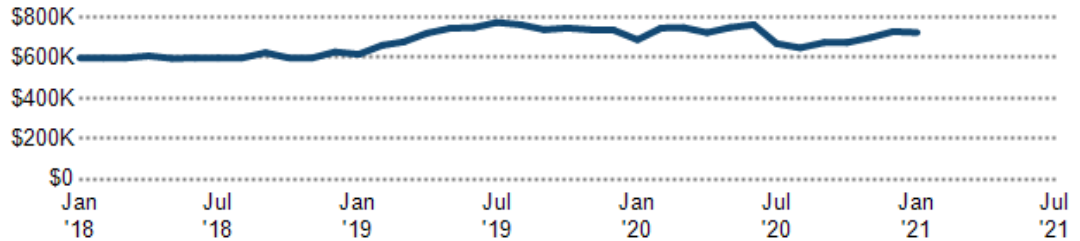
This chart compares the listing price and listing volume for homes in an area. Listing prices often follow listing volume, with a time lag, because supply can drive price movements.

Data Source: On- and off-market listings sources

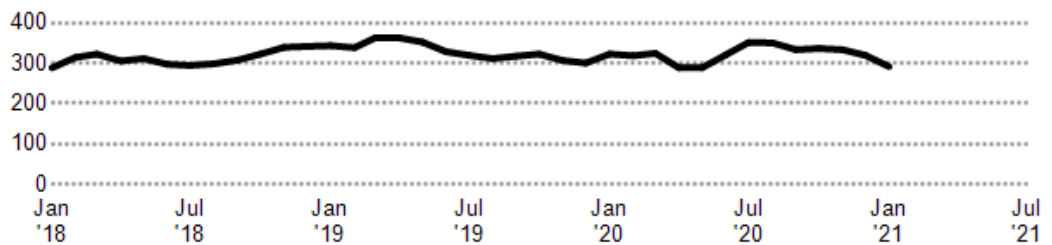
Update Frequency: Monthly

- Median List Price
- Listing Volume

### Median List Price



### Listing Volume



## Listing Inventory

This chart shows the number of For Sale listings in a ZIP code.

Data Source: On- and off-market listings sources

Update Frequency: Daily

- ZIP Count Listings by Property Type





## Inventory of Distressed Listings

Pre-Foreclosure 1

This chart shows the count of distressed properties (all stages of foreclosure) that are for sale in a ZIP code.

Data Source: Public records and MLS data where licensed

Update Frequency: Daily

Inventory of Distressed Listings

## Median Sales Price by Square Footage

This chart shows the median price of homes reported sold in the past six months, according to the size of the living space (square footage sourced from public records). The amount shown for the subject property is sold data where available, or the property's estimated value when sales data are unavailable (such as non-disclosure states) or provided in range format.

Data Source: Public records and MLS data where licensed

Update Frequency: Monthly

This House  
Comps

### This House

2,595 sq. ft. \$655,288

### Comps

2,000 - 2,200 sq. ft.	\$580,000
1,800 - 2,000 sq. ft.	\$632,500
1,600 - 1,800 sq. ft.	\$574,166
1,400 - 1,600 sq. ft.	\$442,500
1,200 - 1,400 sq. ft.	\$479,000

## Price per Bedroom of Homes Sold

This chart shows the distribution of homes reported sold in the past six months at different prices per bedroom in the area of your search. The amount shown for the subject property is sold data where available, or the property's estimated value when sales data are unavailable (such as a non-disclosure state) or provided in range format.

Data Source: Public records and MLS data where licensed

Update Frequency: Monthly

This House  
Comps

### This House

\$131K 1

### Comps

> \$300K	1
\$275K - \$300K	1
\$225K - \$250K	1
\$200K - \$225K	2
\$175K - \$200K	1
\$125K - \$150K	1

## Price per Square Foot of Homes Sold

This chart shows the distribution of homes reported sold in the past six months at different prices per square foot (living area sourced from public records).

Data Source: Public records data

Update Frequency: Monthly

■ This House  
■ Comps

### This House

\$252 1

### Comps



## Price Range of Homes Sold

This chart shows the distribution of homes reported sold in the past six months within different price ranges in the area of your search. The amount shown for the subject property is sold data where available, or the property's estimated value when sales data are unavailable (such as a non-disclosure state) or provided in range format.

Data Source: Public records data

Update Frequency: Monthly

■ This House  
■ Comps

### This House

\$655K 1

### Comps



## Age Range of Homes Sold

This chart shows the distribution of homes reported sold in the past six months of different age ranges in the area of your search.

Data Source: Public records data

Update Frequency: Monthly

■ This House  
■ Comps

### This House

65 yrs 1

### Comps



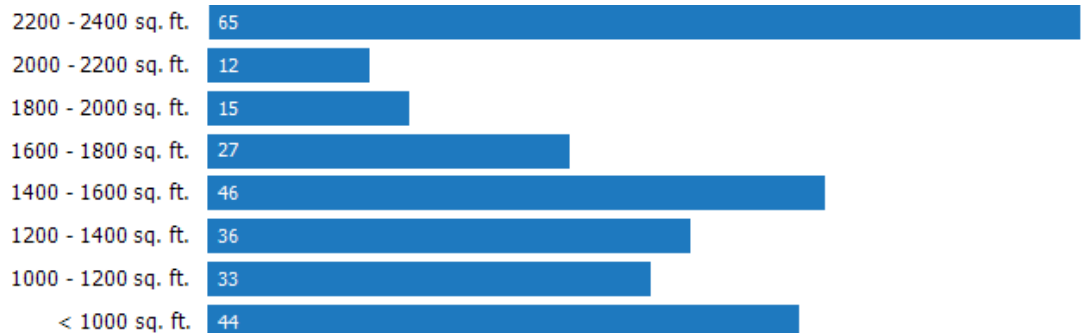
## Size of Homes Sold

This chart shows the distribution of homes reported sold in the past six months of different sizes in the area of your search.

Data Source: Public records data

Update Frequency: Monthly

■ Sales Count By Living Area



## Number of Bedrooms in Homes Sold

This chart shows the distribution of homes reported sold in the past six months, according to the number of bedrooms, in the area of your search.

Data Source: Public records data

Update Frequency: Monthly

■ Sales Count by Bedroom







## Neighborhood: People Stats and Charts

	33305	Fort Lauderdale	Broward County	Florida	USA
Population	10.8K	179K	1.91M	20.6M	323M
Population Density per Sq Mi	5.17K	5.14K	1.58K	384	—
Population Change since 2010	+7.4%	+9%	+9.1%	+13%	+7.7%
Median Age	47	43	40	42	38
Male / Female Ratio	60%	52%	49%	49%	49%

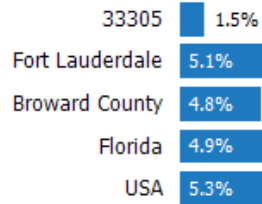
## Education Levels of Population

This chart shows the educational achievement levels of adults in an area, compared with other geographies.

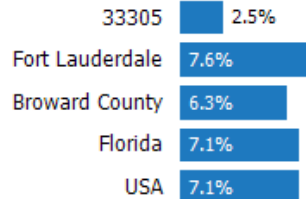
Data Source: U.S. Census American Community Survey via Esri, 2016

Update Frequency: Annually

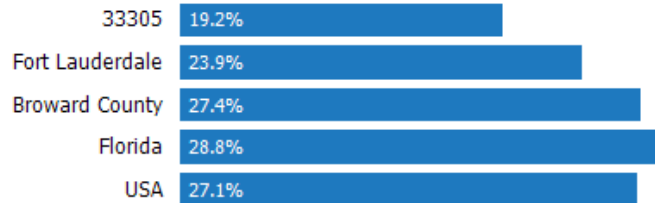
### Less Than 9th Grade



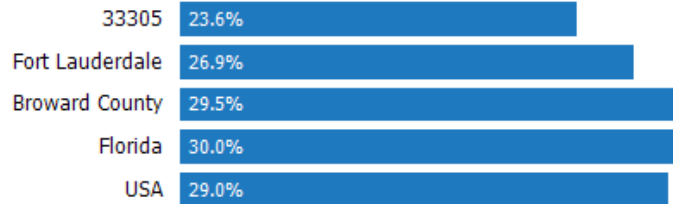
### 9-12th Grade/No Diploma



### High School Graduate



### Associate Degree



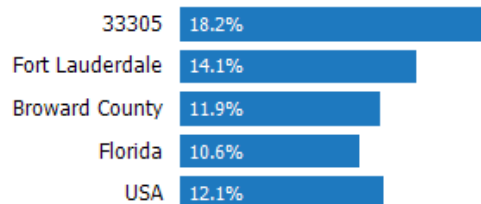
### Bachelor's Degree



### At Least a College Education



### Grad/Professional Degree



## Population of Children by Age Group

This chart shows the distribution of the population of children by age range — from birth to 17 — in the area of your search.

Data Source: U.S. Census

Update Frequency: Annually

33305



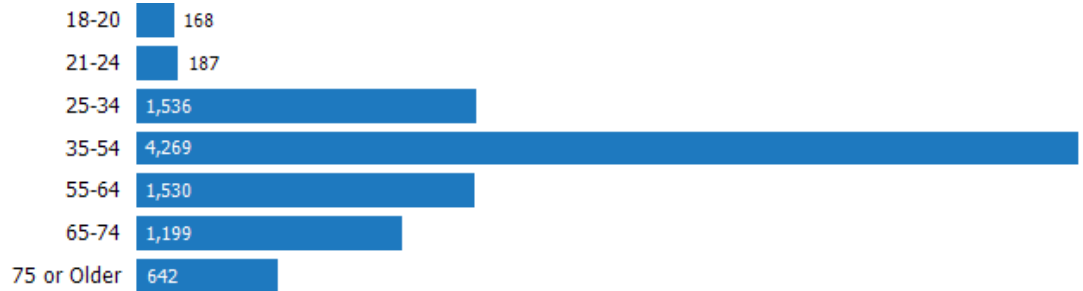
## Population of Adults by Age Group

This chart shows the distribution of the population of adults by age range — from 18 to 75-plus — in the area of your search.

Data Source: U.S. Census

Update Frequency: Annually

33305



## Households With Children

This chart shows the distribution of households with children, categorized by marital status, in the area of your search.

Data Source: U.S. Census

Update Frequency: Annually

33305



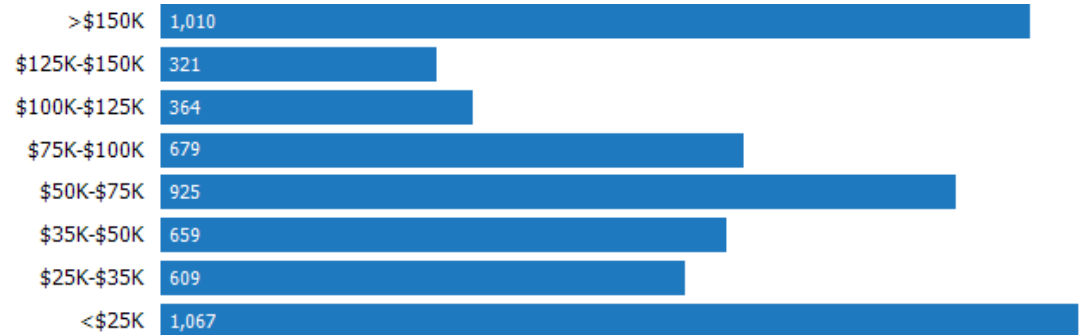
## Household Income Brackets

This chart shows annual household income levels within an area.

Data Source: U.S. Census

Update Frequency: Annually

33305



## Presidential Voting Pattern

This chart shows how residents of a county voted in the 2012 presidential election.

Data Source: USElectionAtlas.org

Update Frequency: Quadrennially





## Neighborhood: Economic Stats and Charts

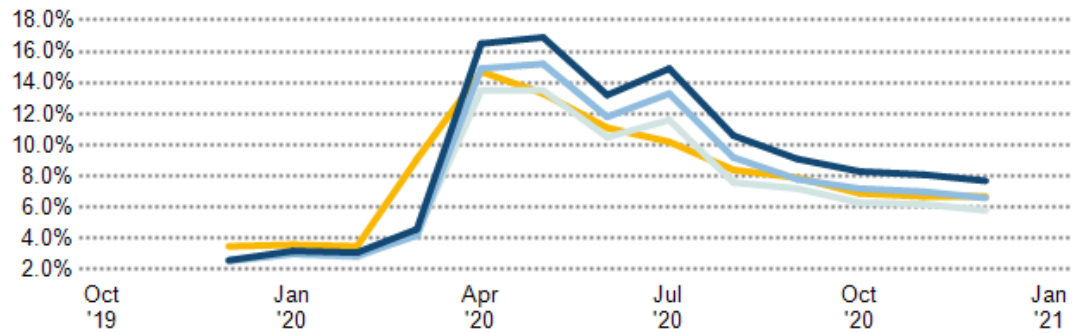
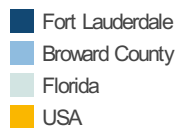
	33305	Fort Lauderdale	Broward County	Florida	USA
Income Per Capita	\$59,660	\$41,887	\$31,464	\$30,197	\$32,621
Median Household Income	\$63,027	\$55,269	\$57,333	\$53,267	\$60,293
Unemployment Rate	—	7.7%	6.6%	5.8%	6.7%
Unemployment Number	—	7.42K	66.5K	587K	10.7M
Employment Number	—	88.7K	941K	9.51M	150M
Labor Force Number	—	96.1K	1.01M	10.1M	161M

### Unemployment Rate

This chart shows the unemployment trend in the area of your search. The unemployment rate is an important driver behind the housing market.

Data Source: Bureau of Labor Statistics

Update Frequency: Monthly



### Occupational Categories

This chart shows categories of employment within an area.

Data Source: U.S. Census

Update Frequency: Annually



## Neighborhood: Quality of Life Stats and Charts

### Quality of Life in 33305

	33305	Fort Lauderdale	Broward County	Florida	USA
Elevation (in feet)	1,604	1,604	1,605	1,616	—
Annual Rainfall (in inches)	60	60	59.59	56.39	—
Annual Snowfall (in inches)	0	0	0	0.06	—
Days of Full Sun (per year)	83	83	83	98	—
Travel Time to Work (in minutes)	—	26	28	27	27
Water Quality - Health Violations	—	—	0	—	—
Water Quality - Monitoring and Report Violations	—	—	3.49	—	—
Superfund Sites	0	2	10	91	2,402
Brownfield Sites	No	Yes	Yes	Yes	Yes

### Average Commute Time

This chart shows average commute times to work, in minutes, by percentage of an area's population.

Data Source: U.S. Census

Update Frequency: Annually

■ 33305



### How People Get to Work

This chart shows the types of transportation that residents of the area you searched use for their commute.

Data Source: U.S. Census

Update Frequency: Annually



### Average Monthly Temperature

This chart shows average temperatures in the area you searched.

Data Source: NOAA

Update Frequency: Annually



## School: Bennett Elementary School

### School Details

**Name**  
Bennett Elementary School

**Level**  
Elementary

**Type**  
Public

**Grades Served**  
PK, K-5

**School District**  
Broward County Public Schools

**Address**  
1755 Ne 14Th St, Ft Lauderdale, FL 33304

**Phone**  
(754) 322-5450

### School Facts

#### Bennett Elementary School

#### Broward County Public Schools

#### Overall Grade

B-

B

Total Enrollment

376

270,978

Students per Teacher

13:1

19:1

Students in Free Lunch Program

85%

62%

#### Academic Grade

C+

B

Average GPA

—

3.37 (out of 50336 responses)

Math Proficiency

52%

58%

Reading Proficiency

47%

56%

Gifted Students

1%

—

AP Enrollments

—

—

Graduation Rate

—

84%

Average ACT Score

—

23 (out of 7433 responses)

Average SAT Score

—

1,130 (out of 18849 responses)

#### Teacher Grade

C+

C

Average Teacher Salary

\$42,890

\$42,890

Teachers in 1st or 2nd Year

—

33%

About this data: Facts and proficiency scores are provided by Niche, which compiles scores, community reviews and other data about schools across the United States. Ratings for this school are based on the most recent available facts for each school and district. Data compiled from the U.S. Department of Education, Private School Universe Survey, Common Core Data and others.

Source: Niche Update Frequency: Quarterly

## School: Sunrise Middle School

### School Details

**Name**  
Sunrise Middle School

**Level**  
Middle

**Type**  
Public

**Grades Served**  
6-8

**School District**  
Broward County Public Schools

**Address**  
1750 Ne 14Th St, Ft  
Lauderdale, FL 33304

**Phone**  
(754) 322-4700

### School Facts

#### Sunrise Middle School

#### Broward County Public Schools

#### Overall Grade

**B**
**B**

Total Enrollment

1,341

270,978

Students per Teacher

19:1

19:1

Students in Free Lunch Program

68%

62%

#### Academic Grade

**B**
**B**

Average GPA

—

3.37 (out of 50336 responses)

Math Proficiency

59%

58%

Reading Proficiency

56%

56%

Gifted Students

6%

—

AP Enrollments

—

—

Graduation Rate

—

84%

Average ACT Score

—

23 (out of 7433 responses)

Average SAT Score

—

1,130 (out of 18849 responses)

#### Teacher Grade

**B-**
**C**

Average Teacher Salary

\$42,890

\$42,890

Teachers in 1st or 2nd Year

—

33%

About this data: Facts and proficiency scores are provided by Niche, which compiles scores, community reviews and other data about schools across the United States. Ratings for this school are based on the most recent available facts for each school and district. Data compiled from the U.S. Department of Education, Private School Universe Survey, Common Core Data and others.  
Source: Niche Update Frequency: Quarterly

## Community Reviews for this School

Posted: 3/13/2020 by Middle School Student

This school is okay. Its a pretty good school overall but i personally wouldn't advise you to send your child here.. Kids smoke in the bathrooms and have sex behind the portables. Teachers are weird and have mental breakdowns and cry and someones always fighting. Some teachers are cool and some aren't.

Posted: 10/23/2019 by Parent

They fail kids completely- no responsibilities. Since we took our kid away 1,5 year ago- he's straight A student with very strong achievements.





---

Posted: 2/25/2018 by Middle School Student

I liked how Sunrise take the time to work with the kids. Teachers at Sunrise are amazing because they act as if their family to help the kids to move up to another level of life. Also they make learning fun for the kids to see that learning something in life doesn't have to be boring or always bad. The only thing I would change about the school is the dirty things like the bathrooms need to be more clean.

---

Posted: 2/13/2018 by Parent

I'm not taking any responsibility from me or my kid but something wrong with school and teacher when last says "It is only parent and student responsibility" after 22 missed assignments and not a single parent contact. And that's regarding gifted student

---

Posted: 4/18/2017 by Senior

My experience at Sunrise Middle School has been pretty good. I attend their Montessori Magnet Program. The work in this program is accelerated. The teachers are very supportive and challenge students to up their academic game. My one wish for Sunrise is that the students in the progressive part of the school non-Magnet program get an equally challenging and competitive education if they desire it and are willing to work hard.

## School: Fort Lauderdale High School

### School Details

**Name**  
Fort Lauderdale High School

**Level**  
High

**Type**  
Public

**Grades Served**  
9-12

**School District**  
Broward County Public Schools

**Address**  
1600 Ne 4Th Ave, Ft Lauderdale, FL 33305

**Phone**  
(754) 322-1100

### School Facts

#### Fort Lauderdale High School

#### Broward County Public Schools

#### Overall Grade

**A**
**B**

Total Enrollment

2,133

270,978

Students per Teacher

22:1

19:1

Students in Free Lunch Program

62%

62%

#### Academic Grade

**B+**
**B**

Average GPA

3.34 (out of 1578 responses)

3.37 (out of 50336 responses)

Math Proficiency

56%

58%

Reading Proficiency

64%

56%

Gifted Students

9%

—

AP Enrollments

789

—

Graduation Rate

98%

84%

Average ACT Score

23 (out of 233 responses)

23 (out of 7433 responses)

Average SAT Score

1,140 (out of 724 responses)

1,130 (out of 18849 responses)

#### Teacher Grade

**B**
**C**

Average Teacher Salary

\$42,890

\$42,890

Teachers in 1st or 2nd Year

—

33%

About this data: Facts and proficiency scores are provided by Niche, which compiles scores, community reviews and other data about schools across the United States. Ratings for this school are based on the most recent available facts for each school and district. Data compiled from the U.S. Department of Education, Private School Universe Survey, Common Core Data and others.  
Source: Niche Update Frequency: Quarterly

## Community Reviews for this School

Posted: 12/30/2020 by Senior

I loved the environment of the school. The students were very open - minded towards one another. Most of all, I loved the variety of college leveled classes that they offered.

---

Posted: 11/27/2020 by Senior

I had a relatively good experience at Fort Lauderdale High School, especially in my freshman year. I was able to try out a number of different clubs while at the school, as well as was able to participate in different types of classes such as Communications Technology or Debate that were gamered towards my diverse interest. The AICE program available at the school was also able to give me a competitive advantage within my education, as I began taking a number of 6 point AICE classes beginning in 9th grade. This helped boost my GPA significantly during my time there, as well as taught me a number of test taking advantages that eventually made AP level classes easier to manage. A lot of my teachers were also very engaged within the curriculum, especially in AICE Marine Science and Sociology, which made the classes more engaging and overall, more enjoyable. The school is also able to integrate social issues on campus and allows for a lot of student involvement and representation.

---

Posted: 11/3/2020 by Senior

Fort Lauderdale is a great school overall. The academics are among the best in the county. I really appreciate the teachers at this school because they are very involved in helping students when help is needed.

---

Posted: 11/1/2020 by Senior

My experience at Fort Lauderdale high school was very mundane. I feel that any school that you go to is what you make it, meaning if you're having a bad experience at least try to make the best out of it and if you're having a good experience enjoy it because you're lucky. I liked that my school was very involved and socially aware of things that were going on in the media. However, what I didn't like about the school was the authority figures. Not to make this review personal or anything but, Some of them I will remember forever because I've had good experiences others I wouldn't bother to think twice about. All in all, the school is amazing it may not be perfect but I'm sure it'll get close to that in the years to come.

---

Posted: 10/1/2019 by Senior

I love how accepting everyone is at Fort Lauderdale. As a freshmen, I was so scared that people would think I was weird or that it would be difficult to make friends, but students, administrators, and teachers we're all so welcoming and helpful. Now that I'm a senior, I hope to be as helpful to incoming students and let them know how amazing FLHS is. My high school experience has been great thanks to Fort Lauderdale. I've never had so many friends! I'm captain of the varsity volleyball team, a National Honor Society member. I've really come out of my shell and become a whole new person that I absolutely love.